



# 48" x 32" Molded Melamine Tabletop

without umbrella hole



Length: 32"  
Width: 48"

## Product Specifications

Product Description	Reference Number	Color	UPC Code 014306	Weight Each (lbs.)	Master Pack	Master Pack Volume (cu. ft)
48" x 32" Molded Melamine Tabletop without hole	99851504	White	925417	39.00	1	2.03
	99851525	Granite Green	925448	39.00	1	2.03
	99851502	Tokyo Stone	925400	39.00	1	2.03
	99851558	Catalan	925479	39.00	1	2.03
	99851576	Aged Oak	925493	39.00	1	2.03
	99851518	Wicker	925431	39.00	1	2.03
	99851508	Teak Decor	925424	39.00	1	2.03
	99851546	Barn White	925455	39.00	1	2.03
	99851571	White Oak	925486	39.00	1	2.03
	99851038	Granite	930302	39.00	1	2.03

## Features & Benefits Warranty: 2 Yrs.

- Trendy marble, granite finish, or deco tops to complement all Grosfillex chairs.
- Hard, smooth molded tabletop made of a molded wood/resin body with a fusion bonded melamine top.
- Stain, burn, scratch and fade resistant.
- Use Grosfillex's wide 4-prong alpha resin lateral base, boomerange large tilting base, Eco-fix lateral, X-One lateral base with anti-skid glides for stability.
- Cleans easily with soap and water.
- Specifically designed and engineered for indoor/outdoor terraces, bars, breakfast areas, concessions, and balconies.
- Customize designs by mixing and matching tabletops and bases.
- Tops and bases sold separately.

The shape of the table top may bend to a concave shape when exposed to direct sunlight. A deflection of as much as 3/16" per linear foot of table length can be expected. This is not a manufacturing defect as this deformation will not affect the structural integrity of the table nor its functionality.



White



Granite Green



Tokyo Stone



Catalan



Aged Oak



Wicker



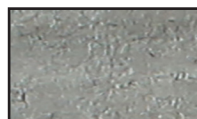
Teak Decor



Barn White



White Oak



Granite

