

24" x 32" Molded Melamine Tabletop without umbrella hole



Length: 24"
Width: 32"
Weight: 15.25 lbs
Thickness: 0.75"

Product Specifications

Product Description	Reference Number	Color	UPC Code 014306	Weight Each (lbs.)	Master Pack	Master Pack Volume (cu. ft)
24" x 32" Molded Melamine Tabletop without hole	UT220004	White	935874	19.00	1	1.07
	UT220025	Granite Green	935843	19.00	1	1.07
	UT220781	Tokyo Stone	935867	19.00	1	1.07
	UT220742	Aged Oak	935812	19.00	1	1.07
	UT220008	Teak Decor	935850	19.00	1	1.07
	UT220780	Barn White	935829	19.00	1	1.07
	UT220782	White Oak	935881	19.00	1	1.07
	UT221038	Granite	939254	19.00	1	1.07
	UT220815	Almeria	940090	19.00	1	1.07
	UT220816	Arizona	940199	19.00	1	1.07

Features & Benefits

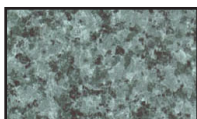
Warranty: 2 Yrs.

- Trendy marble, granite finish, or deco tops to complement all Grosfillex chairs.
- Hard, smooth molded tabletop made of a molded wood/resin body with a fusion bonded melamine top.
- Stain, burn, scratch, and fade resistant.
- Use Grosfillex's wide 4-prong central resin pedestal base 1000, tilt top aluminum base 100, or aluminum central pedestal base, or bar height table base with anti-skid glides for stability. Compatible with X-one base.
- Cleans easily with soap and water.
- Specifically designed and engineered for indoor/outdoor terraces, bars, breakfast areas, concessions, and balconies.
- Customize designs by mixing and matching tabletops and bases.
- Top and Base sold separately.

The shape of the table top may bend to a concave shape when exposed to direct sunlight. A deflection of as much as 3/16" per linear foot of table length can be expected. This is not a manufacturing defect as this deformation will not affect the structural integrity of the table nor its functionality.



White



Granite Green



Tokyo Stone



Aged Oak



Almeria



Arizona



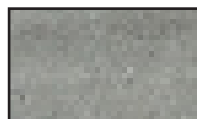
Teak Decor



Barn White



White Oak



Granite



No Spare Parts