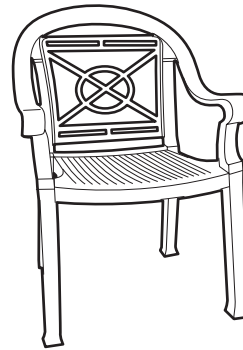




Victoria Stacking Armchair



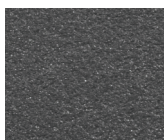
Back Height:	34"
Seat Height:	17"
Arm Height:	25"
Depth:	24"
Width:	23"
Weight:	8.4 lbs

Product Specifications

Product Description	Reference Number	Color	UPC Code 014306	Weight Each (lbs.)	Master Pack	Master Pack Volume (cu. ft)
Victoria Stacking Armchair	46214002	Charcoal	120911	11.00	12	45.36
	46214037	Bronze	128191	11.00	12	45.36
	46214066	Sand	137513	11.00	12	45.36
	US214002	Charcoal	120911	10.23	4	19.27
	US214037	Bronze	128191	10.23	4	19.27
	US214066	Sand	137513	10.23	4	19.27

Features & Benefits Warranty: 3 Yrs.

- Passes ASTM F 1561-96 Class B performance standard for commercial outdoor seating
- Elegant and comfortable highback armchair with a contoured back for indoor/outdoor dining areas.
- Made of Kevring® cast synthetic resin, a proprietary resin composite specifically developed to build functional yet durable commercial outdoor furniture with a true metal texture and design.
- Rated to 300 pounds for safe use in commercial environments.
- Will retain its original color, texture, and finish without rusting, even when exposed to the rigors of outdoor elements.
- 2" x 2" legs with hard wearing footpads for structural rigidity.
- Stacks for easy storage.



Charcoal



Bronze

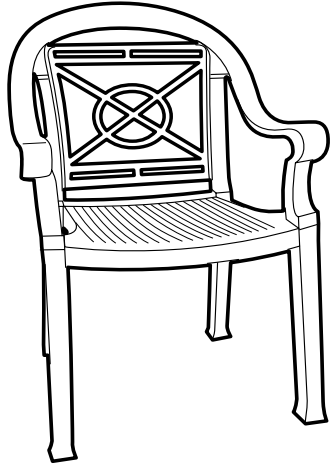


Sand



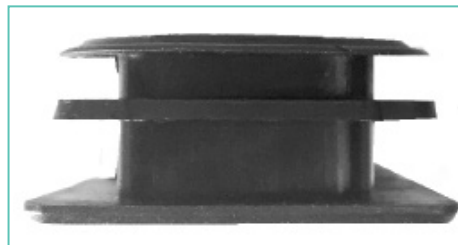
Victoria Stacking Armchair

Spare Parts



Footpads USSP0322

X2



Front Footpads

X2



Rear Footpads



Reference	Description
USSP0322	CHAIR FOOTPAD SET BLACK (2FR/2BK)