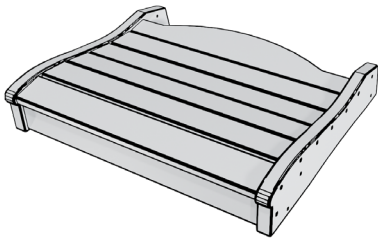




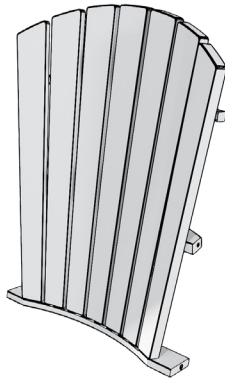
KAILUA - Adirondack Chair Assembly Instructions



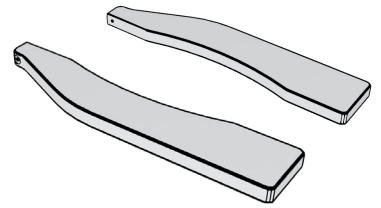
PARTS



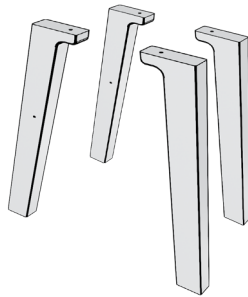
Seat
Assembly x1



Back
Assembly x1

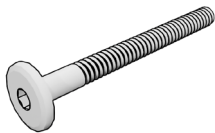


Arm Rests x2

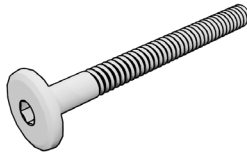


Legs x4

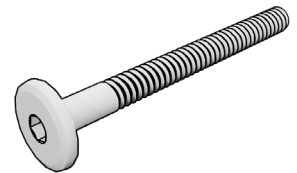
HARDWARE



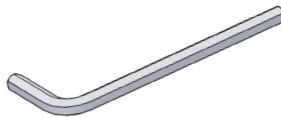
1.1/2" Bolt x10



2" Bolt x2



3" Bolt x2

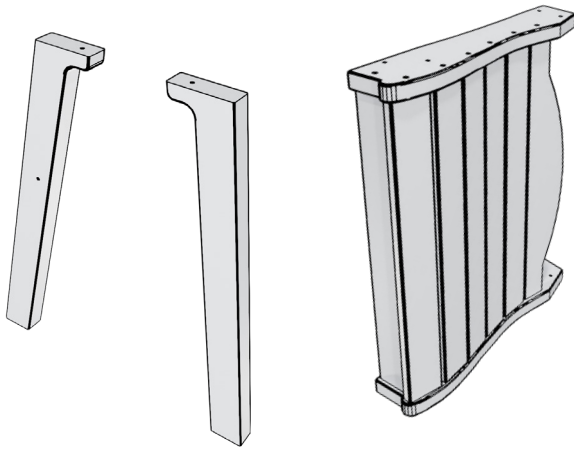


Allen Key

TOOLS REQUIRED

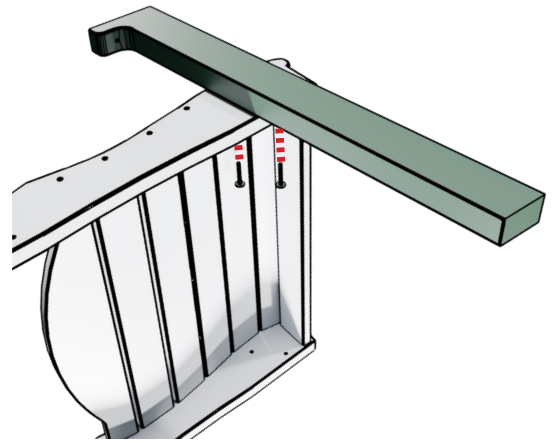
- Impact Driver or Drill
- 7/16" Socket or Wrench

1



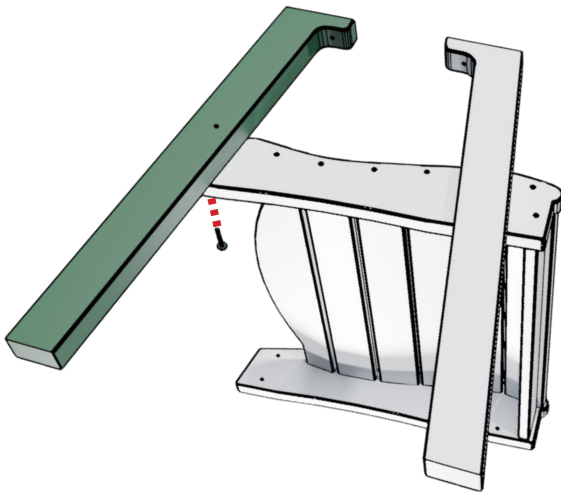
- Locate the Seat Assembly - a Front Leg and a Back Leg.
- **Note:** There is a Left and Right Leg. Make sure you are using the correct one for each side.

2



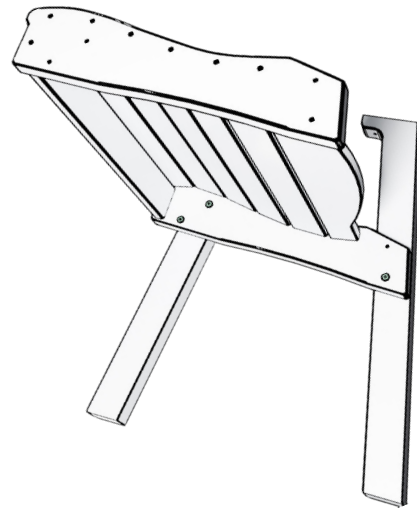
- The Front Leg has two insert nuts installed. Place the leg towards the front of the seat and align the insert nuts with the pre-drilled hole in the seat.
- Fasten the leg to the Seat Assembly using two 1.1/2" Bolts. Only hand tighten all Bolts for now.

3



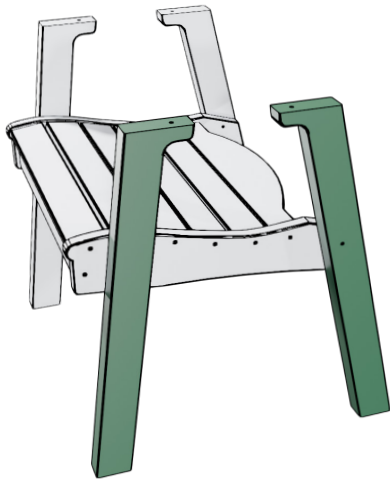
- The Back Leg has one insert nut and one through-hole.
- Align the holes, then fasten the Leg using one 1.1/2" Bolt through the seat into the insert nut in the Leg.

4



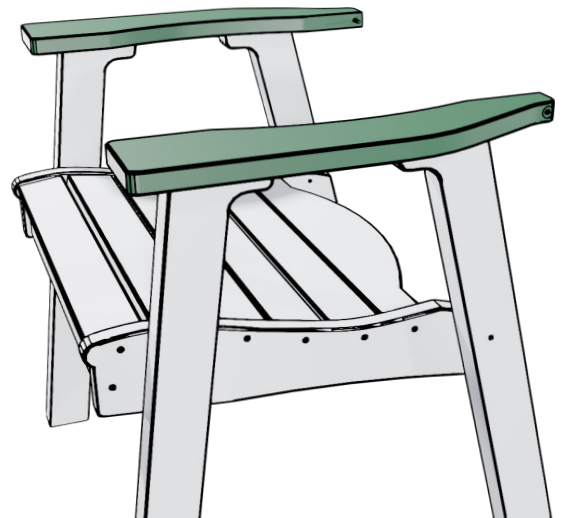
- The underside of the Seat should look like this.

5



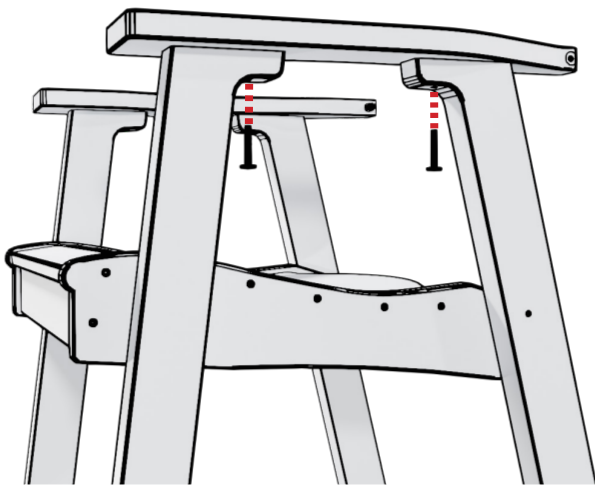
- Repeat the previous steps to install the Legs on the other side.
- Set the Seat Assembly upright when the legs are in place.

6



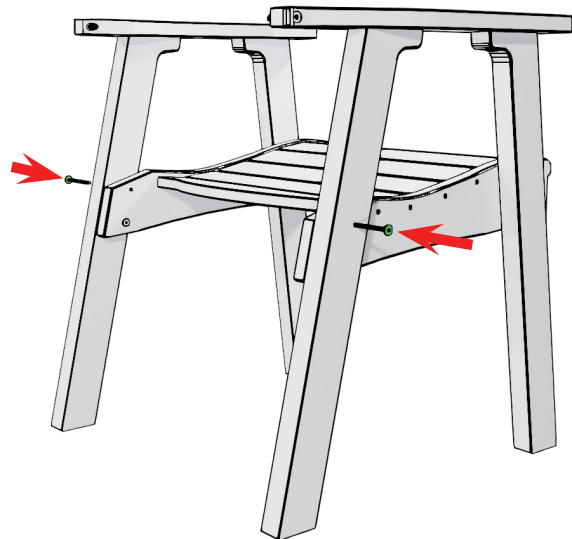
- Place the Arm Rests on the Legs and align the pre-drilled holes.
- **Note:** The Arm Rests have insert nuts installed; these need to be facing down.

7



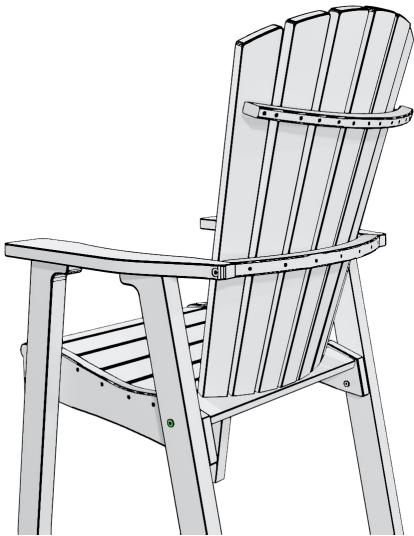
- Fasten the Arm Rests to the Legs using 1.1/2" Bolts.
- Tighten all the Bolts on the chair at this point.

8



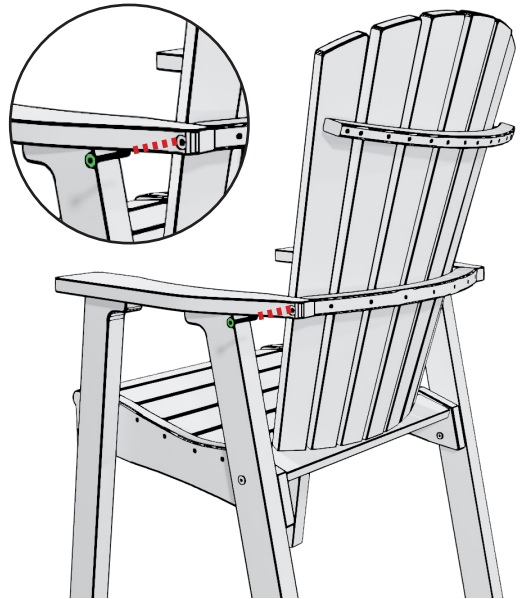
- Place a 3" Bolt in both through-holes in the Legs to prepare for the Back.
- Place these Bolts flush with the inside of the seat for now.

9



- Place the back in position and tighten the 3" Bolts to hold it in place.

10



- Fasten the Arm Rests to the back using 2" Bolts to finish the Chair Assembly.



Cleaning Tips

General Cleaning

- Wipe with soap and water solution using a soft sponge or plastic-bristled brush.
- You can use a soft-bristled toothbrush to clean spaces that are hard to reach.

Deep Cleaning

- A pressure washer can be used on the lightest setting to deep clean your furniture.
- It is not recommended to use more than 1,500psi.
- Keep the tip of the pressure washer at least 10-12 inches away from the furniture so it does not damage the lumber.

CONTACT US

230 OLD WEST PENN AVENUE
ROBESONIA, PA 19551
(800) 233-3186
GFXCUSTOMERSERVICE@GROSFILLEX.COM

SEE OUR FULL COLLECTION

WWW.GROSFILLEXFURNITURE.COM

