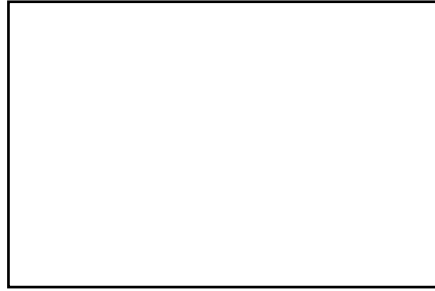




View Product



Length: 48"
 Width: 32"
 Thickness: 10mm
 Unit Weight: 29.5 lbs

48" x 32" HPL Compact Top

Product Specifications

Product Description	Reference Number	Color	UPC Code 014306	Pack Weight Each (lbs.)	Master Pack	Master Pack Volume (cu. ft)
48" x 32" HPL Compact Top	UT330038	Granite	936550	34.95	1	1.53
	US48H790	Kandia Gr. Marble	934495	34.95	1	1.53
	US48H722	Walnut	934532	34.95	1	1.53
	UT330727	Gray Slate	936567	34.95	1	1.53
	UT330245	Drifted Pine	936574	34.95	1	1.53

Features & Benefits Warranty: 2 Yrs.

- Durable and impact resistant
- Water resistant – even when chipped!
- Easy to clean with soap and water – ideal for the foodservice environment
- Strong – the density of HPL is similar to the density of concrete
- 8 pre-installed rails to easily attach to base
- See tabletop to base easy guide for compatability

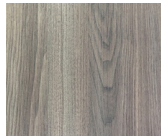
Grosfillex HPL Compact tabletops are perfect for fine dining, indoors or out! They provide the ultimate in strength and beauty along with their easy-to-clean finishes. They are available in attractive decors that feature a realistic "touch" effect. They are fitted with rails for easy installation on our bases, and pair beautifully with our X-One tilting



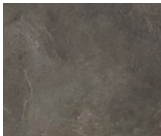
Granite



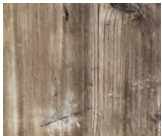
Kandia Gray Marble



Walnut



Gray Slate



Drifted Pine

