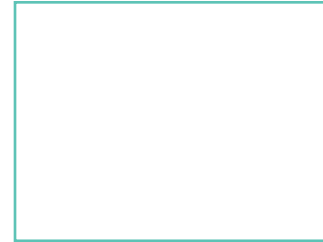




24" x 32" HPL Compact Top



Length: 24"
Width: 32"
Weight: 14.47 lbs
Thickness: 10 mm

Product Specifications

| Product Description | Reference Number | Color | UPC Code 014306 | Weight Each (lbs.) | Master Pack | Master Pack Volume (cu. ft) |
|---------------------------|------------------|-------------------|-----------------|--------------------|-------------|-----------------------------|
| 24" x 32" HPL Compact Top | UT310038 | Granite | 936499 | 17.90 | 1 | 0.85 |
| | US24H790 | Kandia Gr. Marble | 934259 | 17.90 | 1 | 0.85 |
| | US24H722 | Walnut | 934266 | 17.90 | 1 | 0.85 |
| | UT310727 | Gray Slate | 936505 | 17.90 | 1 | 0.85 |
| | UT310245 | Drifted Pine | 936512 | 17.90 | 1 | 0.85 |
| | | | | | | |
| | | | | | | |
| | | | | | | |
| | | | | | | |
| | | | | | | |

Features & Benefits Warranty: 2 Yrs.

- Durable and impact resistant
- Water resistant – even when chipped!
- Easy to clean with soap and water – ideal for the foodservice environment
- Strong – the density of HPL is similar to the density of concrete
- 4 pre-installed rails to easily attach to base

Grosfillex HPL Compact tabletops are perfect for fine dining, indoors or out! They provide the ultimate in strength and beauty along with their easy-to-clean finishes. They are available in attractive decors that feature a realistic “touch” effect. They are fitted with rails for easy installation on our bases, and pair beautifully with our X-One tilting table bases.





32" Square HPL Compact Top



Length: 32"
 Width: 32"
 Weight: 18.93 lbs
 Thickness: 10 mm

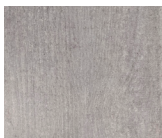
Product Specifications

| Product Description | Reference Number | Color | UPC Code 014306 | Weight Each (lbs.) | Master Pack | Master Pack Volume (cu. ft) |
|----------------------------|------------------|-------------------|--------------------|-----------------------|-------------|--------------------------------|
| 32" Square HPL Compact Top | UT320038 | Granite | 936499 | 22.58 | 1 | 1.04 |
| | US32H790 | Kandia Gr. Marble | 934488 | 22.58 | 1 | 1.04 |
| | US32H722 | Walnut | 934525 | 22.58 | 1 | 1.04 |
| | UT320727 | Gray Slate | 936536 | 22.58 | 1 | 1.04 |
| | UT320245 | Drifted Pine | 936543 | 22.58 | 1 | 1.04 |
| | | | | | | |
| | | | | | | |
| | | | | | | |
| | | | | | | |
| | | | | | | |

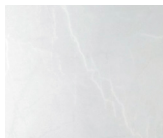
Features & Benefits Warranty: 2 Yrs.

- Durable and impact resistant
- Water resistant – even when chipped!
- Easy to clean with soap and water – ideal for the foodservice environment
- Strong – the density of HPL is similar to the density of concrete
- 4 pre-installed rails to easily attach to base

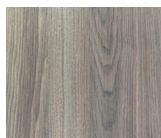
Grosfillex HPL Compact tabletops are perfect for fine dining, indoors or out! They provide the ultimate in strength and beauty along with their easy-to-clean finishes. They are available in attractive decors that feature a realistic “touch” effect. They are fitted with rails for easy installation on our bases, and pair beautifully with our X-One tilting table bases.



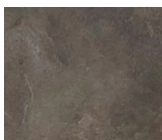
Granite



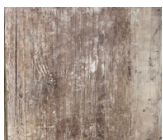
Kandia Gray
Marble



Walnut



Gray Slate



Drifted Pine





48" x 32" HPL Compact Top



Length: 48"
 Width: 32"
 Weight: 29.53 lbs
 Thickness: 10 mm

Product Specifications

| Product Description | Reference Number | Color | UPC Code 014306 | Weight Each (lbs.) | Master Pack | Master Pack Volume (cu. ft) |
|---------------------------------|------------------|-------------------|--------------------|-----------------------|-------------|--------------------------------|
| 48" x 32" HPL Compact Top | UT330038 | Granite | 936550 | 34.95 | 1 | 1.53 |
| | US48H790 | Kandia Gr. Marble | 934495 | 34.95 | 1 | 1.53 |
| | US48H722 | Walnut | 934532 | 34.95 | 1 | 1.53 |
| | UT330727 | Gray Slate | 936567 | 34.95 | 1 | 1.53 |
| | UT330245 | Drifted Pine | 936574 | 34.95 | 1 | 1.53 |
| | | | | | | |
| | | | | | | |
| | | | | | | |
| | | | | | | |

Features & Benefits Warranty: 2 Yrs.

- Durable and impact resistant
- Water resistant – even when chipped!
- Easy to clean with soap and water – ideal for the foodservice environment
- Strong – the density of HPL is similar to the density of concrete
- 8 pre-installed rails to easily attach to base

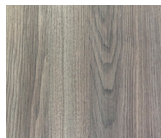
Grosfillex HPL Compact tabletops are perfect for fine dining, indoors or out! They provide the ultimate in strength and beauty along with their easy-to-clean finishes. They are available in attractive decors that feature a realistic “touch” effect. They are fitted with rails for easy installation on our bases, and pair beautifully with our X-One tilting table bases.



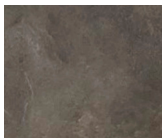
Granite



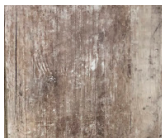
Kandia Gray
Marble



Walnut



Gray Slate



Drifted Pine

