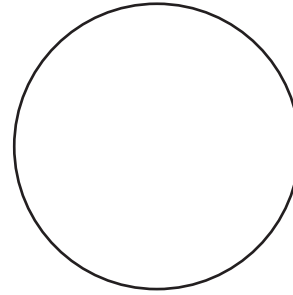




View Product

28" Round Molded Melamine Tabletop without umbrella hole



Diameter: 28"
Thickness: 0.63"
Unit Weight: 14.00 lbs

Product Specifications

| Product Description | Reference Number | Color | UPC Code 014306 | Pack Weight Each (lbs.) | Master Pack | Master Pack Volume (cu. ft) |
|---|------------------|------------|-----------------|-------------------------|-------------|-----------------------------|
| 28" Round Molded Melamine Tabletop without hole | UT225004 | White | 925219 | 14.00 | 1 | 0.73 |
| | UT225742 | Aged Oak | 925288 | 14.00 | 1 | 0.73 |
| | UT225780 | Barn White | 925295 | 14.00 | 1 | 0.73 |
| | UT225815 | Almeria | 940106 | 14.00 | 1 | 0.73 |
| | UT225816 | Arizona | 940205 | 14.00 | 1 | 0.73 |
| | | | | | | |
| | | | | | | |
| | | | | | | |
| | | | | | | |

Features & Benefits Warranty: 2 Yrs.

- Trendy marble, granite finish, or deco tops to complement all Grosfillex chairs.
- Hard, smooth molded tabletop made of a molded wood/resin body with a fusion bonded melamine top.
- Stain, burn, scratch and fade resistant.
- Use Grosfillex's wide 4-prong alpha small resin , boomerang small base, Eco-fix base, or Boomerang bar height table base with anti-skid glides for stability. X-one compatible.
- Cleans easily with soap and water.
- Specifically designed and engineered for indoor/outdoor terraces, bars, breakfast areas, concessions, and balconies.
- Customize designs by mixing and matching tabletops and bases.
- Tops and bases sold separately.

The shape of the table top may bend to a concave shape when exposed to direct sunlight. A deflection of as much as 3/16" per linear foot of table length can be expected. This is not a manufacturing defect as this deformation will not affect the structural integrity of the table nor its functionality.



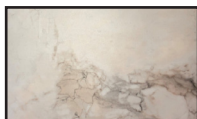
White



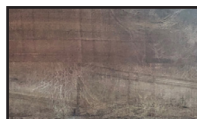
Aged Oak



Barn White



Almeria



Arizona

