



View Product

48" x 32" Molded Melamine Tabletop without umbrella hole



Length: 32"
Width: 48"
Thickness: 0.75"
Unit Weight: 36 lbs

Product Specifications

Product Description	Reference Number	Color	UPC Code 014306	Pack Weight Each (lbs.)	Master Pack	Master Pack Volume (cu. ft)
48" x 32" Molded Melamine Tabletop without hole	UT270004	White	936390	39.00	1	1.44
	UT270742	Aged Oak	936338	39.00	1	1.44
	UT270780	Barn White	936345	39.00	1	1.44
	UT271038	Granite	939322	39.00	1	1.44
	UT270815	Almeria	940168	39.00	1	1.44
	UT270816	Arizona	940267	39.00	1	1.44

Features & Benefits Warranty: 2 Yrs.

- Trendy marble, granite finish, or deco tops to complement all Grosfillex chairs.
- Hard, smooth molded tabletop made of a molded wood/resin body with a fusion bonded melamine top.
- Stain, burn, scratch and fade resistant.
- Use Grosfillex's wide 4-prong alpha resin lateral base, boomerang lateral tilting base, Eco-fix lateral, X-One lateral base with anti-skid glides for stability.
- Cleans easily with soap and water.
- Specifically designed and engineered for indoor/outdoor terraces, bars, breakfast areas, concessions, and balconies.
- Customize designs by mixing and matching tabletops and bases.
- Tops and bases sold separately.

The shape of the table top may bend to a concave shape when exposed to direct sunlight. A deflection of as much as 3/16" per linear foot of table length can be expected. This is not a manufacturing defect as this deformation will not affect the structural integrity of the table nor its functionality.



White



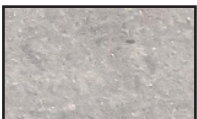
Almeria



Aged Oak



Barn White



Granite



Arizona

