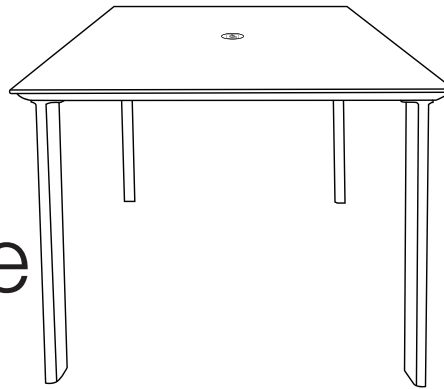




View Product



Sunset 36" Square ADA Dining Table



Height:	30.5"
Vertical Clearance:	29"
Horizontal Clearance:	30"
Clearance Under Table:	19"
Width:	36"
Length:	36"
Unit Weight:	37.9 lbs

Product Specifications

Product Description	Reference Number	Color	UPC Code 014306	Pack Weight Each (lbs.)	Master Pack	Master Pack Volume (cu. ft)
Sunset 36" Square ADA Dining Table	R1001599	Lava/Fusion Bronze	945903	64.12	1	7.21
	R1001288	Granite/Volcanic Black	945880	64.12	1	7.21

Features & Benefits

Warranty: 3 Yrs.

Ensure that all your customers have a comfortable, enjoyable experience with the Grosfillex Sunset ADA Compliant Complete Dining Table. Not only will it be a beautiful addition to your outdoor restaurant & patio dining floorplan, it complies with regulations established by the Americans with Disabilities Act. The table, with its satin-finished cast aluminum frame and HPL tabletop, come complete in one carton with all hardware and easy-to-read instructions so set-up is a breeze. The Sunset ADA Compliant Complete Dining Table is simple to maintain – just wipe with a cloth and mild soap when needed. Rust and UV resistant. Features leg levelers and an umbrella hole (with cap).

- HPL tabletop cleans up quickly and easily
- Ships complete in one carton
- Strong, sturdy design
- 3-year warranty
- Will not rust or get hot in the sun

TOPS

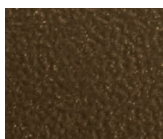


Lava

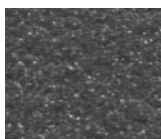


Granite

BASES



Fusion Bronze

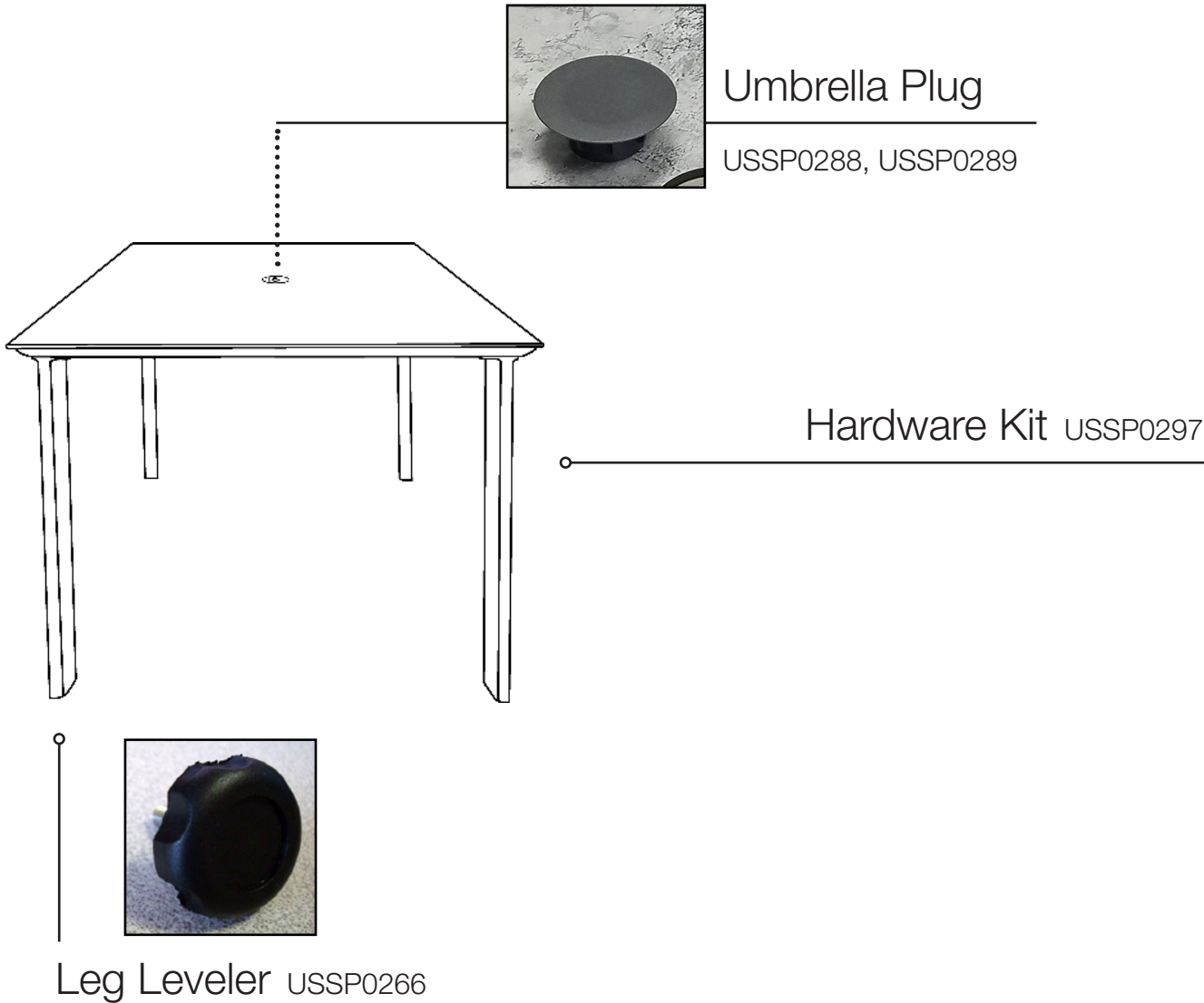


Volcanic Black



Sunset 36" Square ADA Dining Table

Spare Parts



Reference	Description
USSP0288	SUNSET UMBRELLA PLUG BRONZE
USSP0289	SUNSET UMBRELLA PLUG VOL BK
USSP0297	SUNSET TABLE HRDW KIT
USSP0266	SUNSET TABLE LEG LEVELER

